

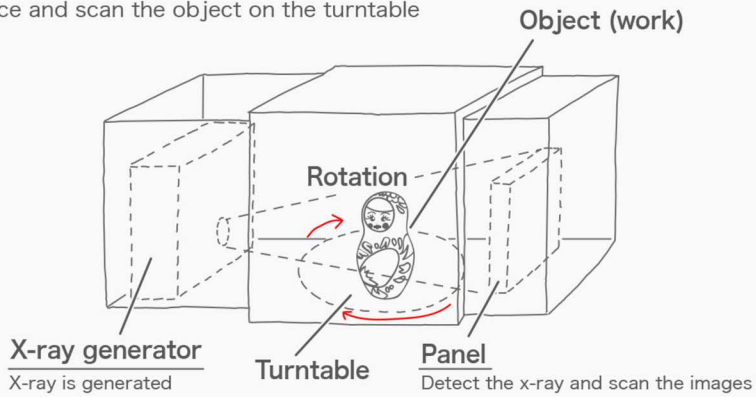


Contact us

E-mail: os@rfsystemlab.com

Structure of NAOMi-CT (3D)

Place and scan the object on the turntable

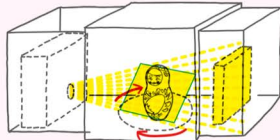


Scan the Matryoshka with a rubber piece inside



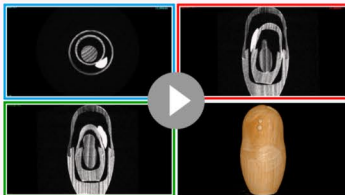
Differences in 3D and 2D

3D : Three Dimensions



Takes about **400 images** with 360-degree rotation.

3D image rendering



*Preview with click

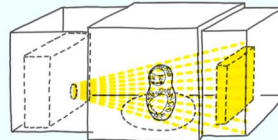


Any slice view available from any angles with 3D.

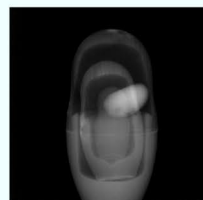


Compact Scan **\$29,500 CT (3D)**
Larger Scan **\$39,500 CT (3D)** [More ▶](#)

2D : Two Dimensions



One shot without rotation.



*Enlarge with click



2D x-ray image with transmitted light.
By rotating the target manually and shooting several x-rays, you have to imagine a cross section view.



Adding parts to CT **\$9,500 (2D)** [More ▶](#)

Select your model for usage and objects!





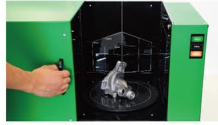
Contact us

E-mail: os@rfsystemlab.com

Easy Scan

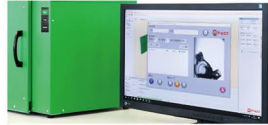
① Position

Place the object and close the door.



② Scan

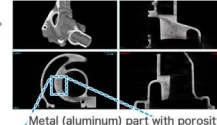
Adjust the settings on the operating system and scan.



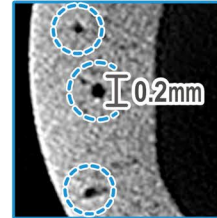
*Approximately 400 images taken for 3D and one image for 2D

③ View

Take a view from your preferred angles of the scanned image.

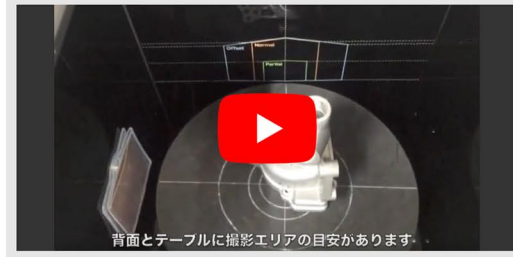


Metal (aluminum) part with porosity



Clear view on "porosity"!

See how quick NAOMi-CT scans



Scannable objects

■ Material

Those with large atomic numbers in the periodic table are less likely to have enough x-ray penetration, which makes it unsuitable for CT scanning.

Smaller atomic numbers (such as resin and aluminum) are well scannable.

>> [Open the Periodic Table of the Elements \(PDF\)](#).

Easy to penetrate



Hard to penetrate

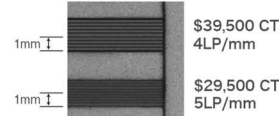
Materials	Penetration thickness	Atomic number
Resin / Plastics	150mm	Smaller than 13
Aluminum	Up to 100mm	13
Iron	10mm	26
Heavy metals	Under 5mm	Copper (29), Zinc (30), Silver (47), Gold (79), etc.

■ Precision

Visible size is about 0.1-0.2mm.

LP/mm (Line pairs per millimeter)

Number of white & black line pairs in 1 mm.



*Click to enlarge

■ Usage examples

Inspection of "porosity" of automobile parts, gas appliances, etc., structural check of electric appliances, confirmation of the vacuum packing condition of processed foods, inspection of containers such as plastic bottles, inspection of shoes, etc.

■ Qualification / Notification

No qualification or license required (in case of Japan).

Please check with your country's regulation for any required documentations in advance.

■ Size

[Refer to specifications.](#)

for the scannable item size and scannable area size.



\$29,500 CT



\$39,500 CT

Even not scannable with the currently available models, please contact us with your request as we would like to refer to it, for future product development.